

JVC

DLA-NZ500

D-ILA Projector

D-ILA Native **4K**
4,096 x 2,160 pixels

The ART of PROJECTION

A True Cinematic Experience

The DLA-NZ500 is the world's smallest 4K D-ILA projector available today*. The projector has been completely redesigned and includes a new casing, optical unit, lens system, and circuit boards. Using JVC's proprietary BLU-Escent Laser light source with 2,000 lumens and Native 4K D-ILA devices to display 4,096 x 2,160 pixel images and a 40,000:1 Native contrast ratio. This projector features Gen2 Frame Adapt HDR to get the most out of HDR content, and Vivid mode to display SDR content such as animations to satisfy a variety of users.

*As of September 2024 for projectors featuring native 4K panel.

KEY FEATURES

- World's Smallest Native 4K Projector* with Front Air Intake and Rear Exhaust Layout
- Proprietary, 0.69-inch Native 4K D-ILA Devices (x3)
- 2,000-lumen BLU-Escent Laser phosphor light engine
- 40,000:1 native contrast, ∞ (infinite):1 dynamic contrast ratios delivers images with exceptional reality
- 101-step Laser Light Control by slider adjustment
- 80 mm Fully Motorized 4K Lens with 1.6X zoom, 70% vertical and 28% horizontal shift ranges
- High-contrast Optical Block
- Two 32Gbps 4K/60p HDMI/HDCP 2.3 inputs
- Second-generation (Gen2) Frame Adapt HDR dynamic tone mapping
- Deep Black Tone Control extends dark tones with greater contrast
- HDR10+ compatibility
- DML (Display Mastering Luminance) adjusts/sets the dynamic range for better HDR experience
- Picture mode "Vivid" for projecting animated works and game CGs in SDR format
- Color Gamut: 100% sRGB
- Installation Mode with 5 customizable presets
- ISF Certified, plus JVC Auto Calibration
- Multiple Pixel Control (MPC) for increased sharpness and detail
- 3-year Warranty with first year advanced replacement

Precision

D-ILA

BLU-Escent
Laser

HDR
10+ Dynamic Range

HDR10+

PICTURE
MODE

World's Smallest Native 4K Projector*

Completely redesigned with a new chassis, optical units, lens system, and circuit boards, the DLA-NZ500 is the world's smallest native 4K projector*. While maintaining a small footprint, this model incorporates JVC's proprietary BLU-Escent laser light source and native 4K devices. The exhaust has been installed at the rear to reduce the impact of heat on the projection screen, and to enable greater flexibility in installation.



*As of September 2024 for projectors featuring native 4K panel.

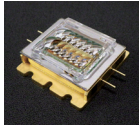
Pixel Perfect Resolution with Native 4K Input and 4K D-ILA

Signals input via the 32Gbps 4K/60p HDMI terminal go through the 0.69-inch native 4K D-ILA device to project full native 4K resolution images (4,096 x 2,160 pixels). JVC's BLU-Escent Laser light source and a native contrast ratio of 40,000:1 achieves images filled with reality.



2,000-Lumen BLU-Escent Laser for Bright Images

JVC's original BLU-Escent Laser light source designed especially for the DLA-NZ500 is capable of achieving exceptional peak brightness of 2,000 lumens with 20,000 hours of long life. Housed in compact casing, the laser light engine provides higher output, greater efficiency, and quieter operation, making it an excellent solution for demanding home theater installations.



BLU-Escent Laser

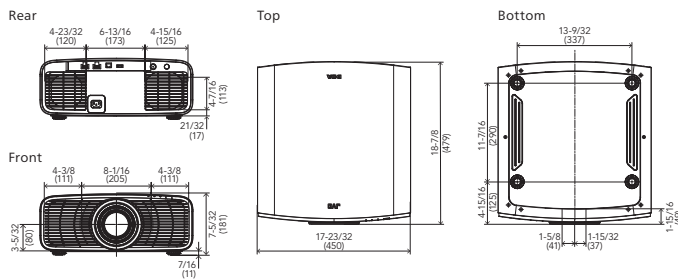
Fully Motorized 4K Lens

The 1.6x fully motorized zoom & focus, 80-mm 4K lens is capable of projecting high-resolution images to every corner of the screen, while securing wide shift ranges of 70% vertically and 28% horizontally for flexible installation.

15-element, 11-group
80-mm lens



External Dimensions/Unit: inches (mm)



Gen2 Frame Adapt HDR offers Deeper Blacks and More

The Gen2 Frame Adapt HDR function instantaneously analyzes the different peak brightness per scene or per frame for HDR10 content and performs real-time tone mapping for optimized brightness, color and details. When combined with each of the following modes including the new Deep Black Tone Control, the projector detects and analyzes image data contained in HDR sources to project the best of what each source has to offer:



Original Image



Frame Adapt HDR (Conventional)



Gen2 Frame Adapt HDR

- **Deep Black Tone Control** subdues tones in dark areas for more realistic darkness.
- **DML (Display Mastering Luminance)** adjusts/sets the dynamic range to match the image for a much better HDR experience.
- **FILMMAKER MODE™** recreates picture quality that is faithful to the original master.



Picture Mode "Vivid"

Made to reproduce SDR content with a narrow dynamic range in more saturated colors with greater vividness, the Vivid mode is excellent for SDR animated works and gaming CGs.



i For more information, scan/click on the QR code to access:

Official Website of the new D-ILA projectors

Screen adjustment mode table

Specifications

GENERAL		DLA-NZ500
Device	0.69-inch Native 4K D-ILA Device (4,096 x 2,160) x3	
Display Resolution	4,096 x 2,160 (Native)	
Lens	x1.6 motorized zoom & focus, 80 mm diameter	
Lens Shift	Vertical: ±70%, Horizontal: ±28% (motorized in 16:9 aspect ratio)	
Projection Display Size	60 inch – 200 inch diagonal	
Light Source	BLU-Escent Laser Diode	
Brightness	2,000 lm	
Contrast Ratio	Native: 40,000:1, Dynamic: ∞:1	
Cinema Filter (Color Gamut)	sRGB 100%	
Input Terminal	HDMI	2 (32 Gbps/HDCP 2.3, no support for CEC)
Control Terminal	LAN	1 (RJ45)
Service Terminal	SERVICE	1 (USB Type A) for firmware update and backing up settings
Power Consumption	280 W (Network standby: 1.5W, Eco-mode standby: 0.3W)	
Power Requirement	AC 100-240V, 50/60Hz	
Dimensions (W x H x D, including feet)	17-23/32 in x 7-5/32 in x 18-7/8 in / 450 mm x 181 mm x 479 mm	
Weight (net)	32.2 lb. / 14.6 kg	

• Design and specifications are subject to change without notice. • Values are typical. Depends on the projector setting conditions and usage environment. • All pictures in this brochure are simulated. • D-ILA is a registered trademark of JVC KENWOOD Corporation. • BLU-Escent Laser, Frame Adapt HDR, and Clear Motion Drive are trademarks of JVC KENWOOD Corporation. • FILMMAKER MODE™ logo and its trade name are registered trademarks of UHD Alliance, Inc. in the US and other countries. • HDR10+™ logo is a trademark of HDR10+ Technologies, LLC. • YouTube™ is a trademark or registered trademark of Google LLC. • ISF is a registered trademark of Imaging Science Foundation, Inc. • The terms HDMI, HDMI High-Definition Multimedia Interface, HDMI trade dress and the HDMI Logos are trademarks or registered trademarks of HDMI Licensing Administrator, Inc. • All other brand or product names may be trademarks and/or registered trademarks of their respective owners. • Any rights not expressly granted herein are reserved.

Copyright © 2024, JVC KENWOOD Corporation. All Rights Reserved.



DISTRIBUTED BY

<https://www.jvc.com/>

PFJ-24016UG-2
Printed in the U.S.A.

"JVC" is the trademark or registered trademark of JVC KENWOOD Corporation.