



VIVID *audio*

KAYA C35

The centre channel of the Kaya range with controlled mid and high directivity. Perfect for home theatre systems.



KAYA C35

THE CENTRE OF IT ALL.

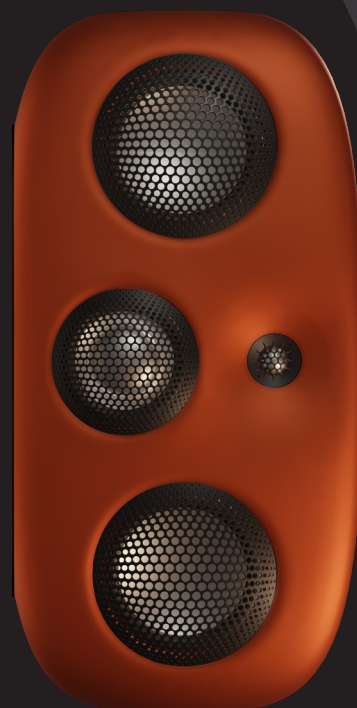
With their controlled mid and high directivity, the Kaya range speakers are ideal for home theatre applications. Delivering all the features of its siblings including the use of exponentially tapered tube reflex loading first used on our Giya range to absorb all internal enclosure resonances, the Kaya C35 centre channel is the perfect complement to the K45 and K90 in a home theatre system or may equally be used in all three L/C/R positions.

While using twin forward-facing C125L bass drivers to handle frequencies below 300Hz, the C35 nevertheless uses reaction-cancelling ports positioned on the end faces to minimise cabinet vibrations. As with K45 and K90, mid frequencies are handled by the C100SE mounted in its own exponential absorber and high frequencies are delivered by the D26 tweeter mounted in a shallow waveguide for directivity control and time alignment.

Kaya C35 is available with a matching stand but is equally comfortable in a shelf mounted position.

Specification

Configuration	3-way, 4 driver system
Cabinet material	Vacuum-infused glass reinforced sandwich composite
Cabinet colour	Piano Black, Lexus Pearl White, Oyster Grey Matte
Bespoke cabinet colour	Any PPG automotive colour available on request
Drive units	HF: D26 – 26 mm alloy dome unit with tapered tube loading MF: C100SE – 100mm alloy cone unit in exponentially tapered tube loading LF: C125 – 2 x 125 mm alloy coned unit in tapered tube enhanced reflex loading
Bass loading	Exponentially Tapered Tube enhanced bass reflex
Sensitivity	87 dB @ 2,83 VRMS at 1 m on axis
Nominal impedance (Ω)	6
Frequency range (Hz)	43 - 36.000 (-6dB)
Frequency response (Hz)	49 - 33.000 +/- 2dB on reference axis
First D26 Break Up mode (Hz)	44.000
Harmonic distortion (2nd and 3rd harmonics)	< 0,5% over frequency range
Cross over frequencies (Hz)	300, 3.000
Power handling (music program)	25W - 500W
Loudspeaker dimensions	340 mm (H) x 680 mm (W) x 280 mm (D)
Net weight	23 kg
Shipping dimensions	390 mm (L) x 730 mm (W) x 330 mm (H)
Shipping weight	25 kg



VIVID audio®

Headquarters:

Vivid Audio Holding B.V. • Kaap Hoorndreef 66 • 3563 AW Utrecht • The Netherlands
Tel: +31 (0) 626 776 787 • Email: info@vividaudio.com

vividaudio.com

©2022 Vivid Audio. All rights reserved.